



Live & Tell™
BY L.A.T.



RABBIT SKINS™

2027 lookbook



Live & Tell™

BY L.A.T.

BRAND POSITIONING

Live & Tell is a premium lifestyle brand rooted in fashion inspiration, creating timeless, elevated styles that transcend fleeting trends. Built on real-world body data, we make clothes that consistently fit better.

It's where effortless style meets the art of storytelling.

PILLARS

- Timeless, elevated styles with trend-inspired details
- We make clothes that just fit better
- Built to tell lasting stories: soft, durable, and decorator friendly

www.liveandtell.com



BRAND POSITIONING

Rabbit Skins is a purpose-driven brand designed for the earliest stages of life – because tiny humans deserve clothes that meet big standards – wherever their story begins. Rooted in safety, comfort, and durability, our products are created to support real movement and everyday moments – from first steps to first milestones. It's where softness meets reliability, and every piece is made to be worn, trusted, and shared.

PILLARS

Soft. Safe. Secure.

Comfort-first essentials designed for movement and all-day wear, featuring thoughtful details like SnapEase closures for ease and security – while supporting sustainability efforts that help reduce environmental impact.

Pure. Trusted. Tested.

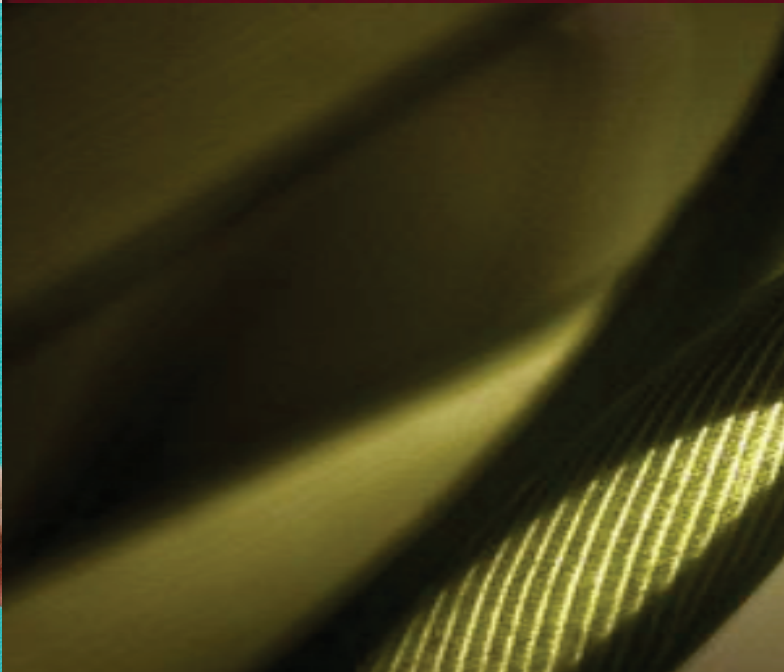
Crafted with clean, conscious materials and fully CPSIA compliant, our products are made without harmful chemicals – backed by over 40 years of trusted expertise in what touches baby's skin.

Ethical. Responsible. Kind.

Durable, decorator-friendly styles produced in WRAP-certified facilities, ensuring every piece is made under safe, ethical, and responsible conditions you can feel confident in.

www.rabbitskins.com





2027 Inspiration

Fabric

Our fabrics are carefully chosen to strike a balance between comfort, durability, and style. Each piece is made with materials that feel as good as they look—soft to the touch and designed to move with you. Subtle textures and refined finishes add depth to every silhouette, creating a collection that transcends fleeting trends.

Color

From understated tones to more expressive hues, the palette brings balance to the entire collection. Each color adds its own personality while working together to create a cohesive, effortless look.

Style

Our approach to style is rooted in simplicity, with a focus on clean lines and intentional design. Each piece is thoughtfully constructed to create a refined, silhouette that feels both current and enduring. It's about effortless confidence—styles that stand on their own while integrating seamlessly into a wardrobe.

2027

New Styles

6928

UNISEX MOCK NECK
FLEECE SWEATSHIRT

The Mock Neck Fleece redefines a classic layer with a modern point of view. Designed with a clean silhouette and a structured rib neckline, it delivers a refined look without sacrificing comfort. The soft fleece interior provides warmth, while the streamlined fit makes it easy to wear on its own or layered. It's a versatile essential that moves effortlessly between seasons and settings.

3312

TODDLER VINTAGE
WASH T-SHIRT

The Vintage Wash Toddler Tee brings a timeless feel to everyday essentials. Crafted with a soft hand and a gently worn-in finish, it's designed for comfort from the very first wear.

4425

INFANT LAP SHOULDER
BAMBOO BODYSUIT

The Infant Lap Shoulder Bamboo Bodysuit is designed with comfort at its core. Crafted from an ultra-soft 70% viscose from bamboo/30% organic combed ring-spun cotton jersey, it offers a breathable, gentle feel against delicate skin. The lap shoulder neckline allows for easy changes, while the clean silhouette keeps the look simple and refined—an everyday essential, thoughtfully elevated.

L&T
BY L.A.T.



Live & Tell
BY L.A.T.

6928 Unisex Mock Neck Fleece Sweatshirt

7.4 oz 60% combed ringspun cotton/40% polyester 3-end fleece. 100% cotton faced on all solid colors. Mock neck collar. Jersey back neck tape. Locker Patch. Drop Shoulder. Rib Collar, Cuffs and Bottom Band. Double needle topstitch at seams. Side Seam Construction. EasyTear Label. Sizes: S-3X

One piece, many ways to wear it. Layered or solo, dressed up or down—the Mock Neck Fleece is a versatile staple for everyday dressing.



Sports Club
19 82
EAST COAST DIVISION
team/club graphic

♡ =
Unisex Style

* Ideal for Embroidery, Screenprinting or Patches



Case Price: \$12.50
Expected Delivery: September 2026







Case Price: \$5.25
 Expected Delivery: July 2026

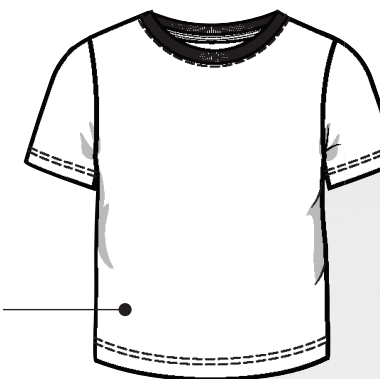
Note: Each piece achieves its authentic look and feel through special dye and mineral wash processes, resulting in unique variations in texture and shade. These are intentional and make every piece one of a kind.



3312 Toddler Vintage Wash T-shirt

5.7 oz 55% ringspun cotton/45% polyester vintage washed jersey. Rib Collar. Self-fabric back neck tape. Double needle coverstitch at sleeves and hem for clean finish. Side seam construction. EasyTear Label. CPSIA compliant tracking label in side seam. Sizes: 2-5/6

Soft, easy, and made for everyday play. The Vintage Wash Toddler Tee has that perfectly worn-in feel kids love, with a relaxed fit that moves with them. It's simple, comfortable, and goes with just about everything.



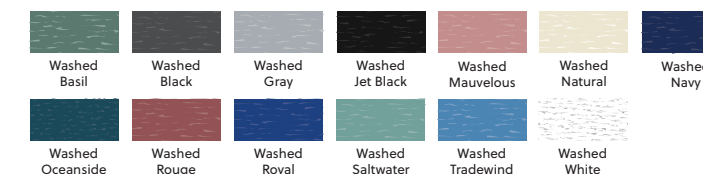
DECORATOR'S DREAM!
 ↓ ↓ ↓
NO BLEEDING OR DYE MIGRATION



screenprint resort graphic



THE SOFTEST TEE EVER.







4425 Infant Lap Shoulder Bamboo Bodysuit

5.3 oz 70% viscose from bamboo/30% combed ringspun organic cotton jersey. Rib binding at lap shoulder, neck, sleeves and leg opening. Innovative snap tape closure. Flatlocked coverstitch at armhole and side seam. Side seam construction. EasyTear™ label. CPSIA compliant tracking label in side seam. Sizes: NB-24M

Case Price: \$4.50
Expected Delivery: September 2026

earth friendly style

* snap tape closure

unisex style

soft, breathable bodysuit keeps baby comfortable all day—naturally gentle and temperature-regulating, and a parent favorite for everyday wear. Finished with lap shoulders for easy changes, it's a simple essential made with care.

screenprint spring graphic







2027

New Colors



Canyon

Warm and grounded—Canyon is inspired by sun-washed earth tones and natural landscapes. Its rich, muted warmth brings a sense of depth and ease to the collection, offering a fresh alternative to traditional neutrals.



Olive Branch

Soft, and quietly refined, Olive Branch is a nature-inspired neutral that brings a sense of ease to the palette. Its muted green tone feels balanced and versatile – subtle enough to function as a neutral, yet distinct enough to add depth and character.



Washed Royal

Rich yet softened, Washed Royal is a take on a classic statement blue. Its subtly faded finish tones down traditional vibrancy, creating a lived-in depth that feels both elevated and effortless.

L&T
BY L.A.T.



2027

New Prints



Sage Timberwood

Rooted in nature and reimagined for everyday wear, Sage Timberwood blends muted greens with softened earth tones for a tonal take on a classic pattern. The result feels subtle, balanced, and easy – less about contrast, more about cohesion.



Sand Timberwood

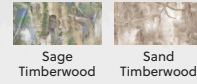
Soft, sun-washed, and naturally grounded, Sand Timberwood reimagines a classic pattern through a warm, neutral lens. Muted desert tones replace traditional contrast, creating a more refined, tonal expression.

L&T
BY L.A.T.





6901
Fine Jersey T-Shirt



Case Price: \$6.35
Expected Delivery: September 2026

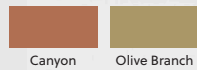


3520
Boxy Fine Jersey T-Shirt



Case Price: \$6.95
Expected Delivery: September 2026

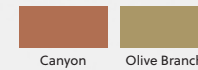
6901
Fine Jersey T-Shirt



Expected Delivery: August 2026



3520
Boxy Fine Jersey T-Shirt



Expected Delivery: August 2026





3518
Women's Boxy
Fine Jersey T-Shirt



Canyon

Expected Delivery: July 2026



2692
Girls' Fine Jersey Tank



Pink

Expected Delivery: July 2026

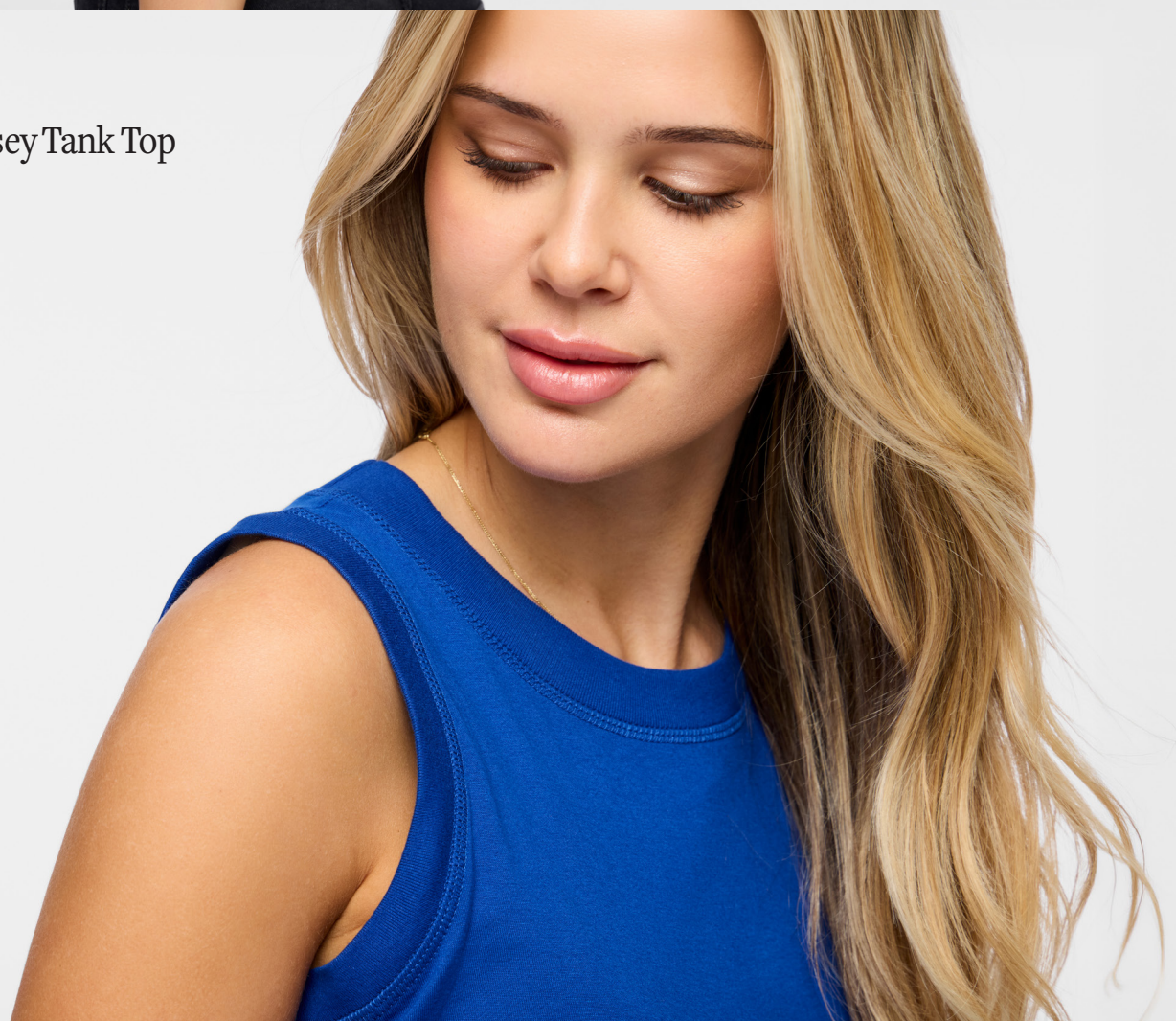
3592
Women's Fine Jersey Tank Top



Canyon

Royal

Expected Delivery: September 2026



6123
Youth Fine Jersey Tank



Royal

Expected Delivery: January 2027





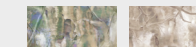
6918
Long Sleeve Fine Jersey Shirt



Royal

Expected Delivery: September 2026

6926
Pullover Fleece Hoodie



Sage Timberwood Sand Timberwood

Case Price: \$18.50

Expected Delivery: September 2026



6925
Fleece Sweatshirt



Hazel Forest Purple

Expected Delivery: August 2026





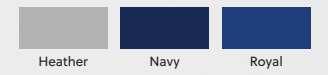
6926
Pullover Fleece Hoodie



Expected Delivery: August 2026



3525
Women's Weekend
Fleece Sweatshirt



Expected Delivery: August 2026



6927
Full Zip Fleece Hoodie



Expected Delivery: August 2026



6904
Bamboo T-Shirt

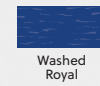


Blush

Expected Delivery: July 2026



3502
Women's Dolman Sleeve
Vintage Wash T-Shirt



Washed
Royal

Note: Each piece achieves its authentic look and feel through special dye and mineral wash processes, resulting in unique variations in texture and shade. These are intentional and make every piece one of a kind.

Expected Delivery: August 2026

6902
Vintage Wash Jersey T-Shirt



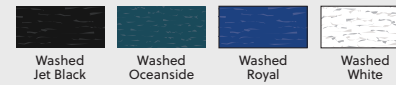
Washed
Royal

Note: Each piece achieves its authentic look and feel through special dye and mineral wash processes, resulting in unique variations in texture and shade. These are intentional and make every piece one of a kind.

Expected Delivery: August 2026



6102
Youth Vintage Wash Jersey T-Shirt



Washed
Jet Black Washed
Oceanside Washed
Royal Washed
White

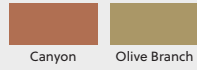
Note: Each piece achieves its authentic look and feel through special dye and mineral wash processes, resulting in unique variations in texture and shade. These are intentional and make every piece one of a kind.

Expected Delivery: August 2026





3321
Toddler Fine Jersey T-Shirt



Expected Delivery: May 2026



3323
Toddler Fine Jersey Tank



Expected Delivery: January 2027

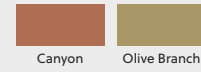


3339
Toddler Girls' Flutter Sleeve
1x1 Baby Rib T-Shirt



Expected Delivery: July 2026

3302
Toddler Long Sleeve
Fine Jersey Shirt



Expected Delivery: July 2026





3322
Infant Fine Jersey T-shirt



Basil

Expected Delivery: May 2026



3502



6927



3525



3525



6935



3525

4439
Infant Girls' Lap Shoulder Flutter
Sleeve 1x1 Baby Rib Bodysuit



Navy

Expected Delivery: July 2026



6927



3525



3502

L&T™
BY L.A.T.



East Coast Warehouse

137 Leo Taylor Lane
Ball Ground, GA 30107

West Coast Warehouse

2070 Brierley Way
Sparks, NV 89434

www.latapparel.com

ASI 65948 | PPAI 254347 | SAGE 63246