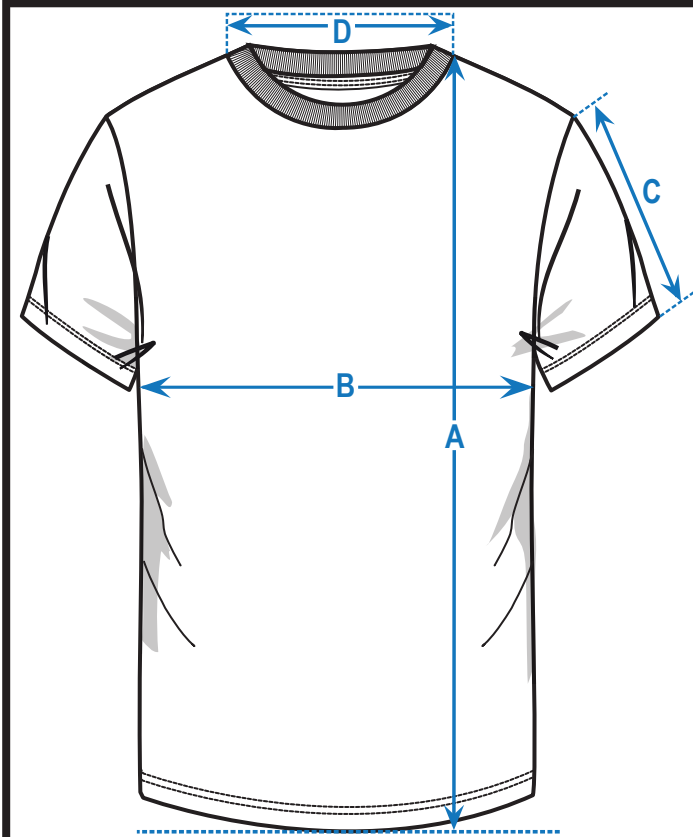
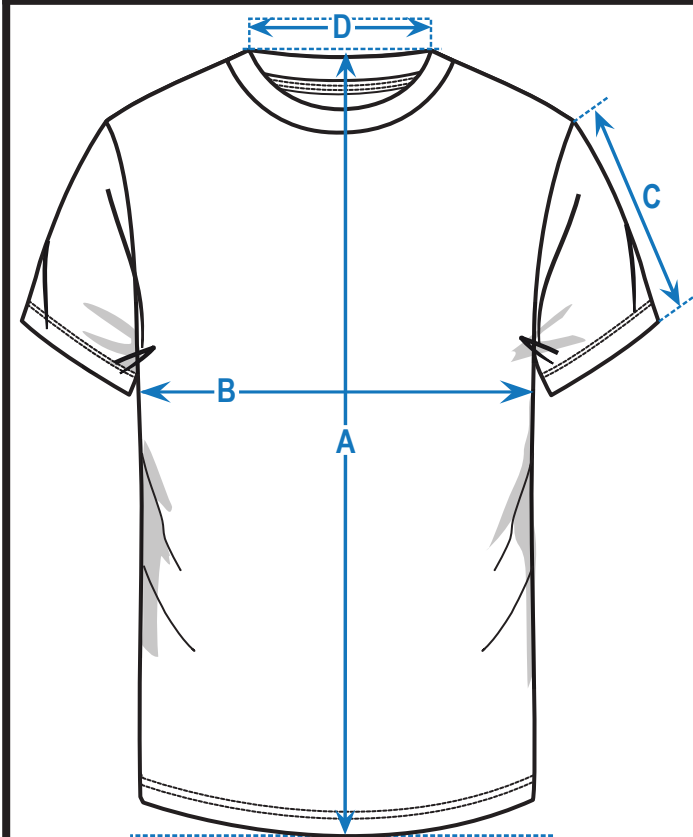


MEASURING GUIDES



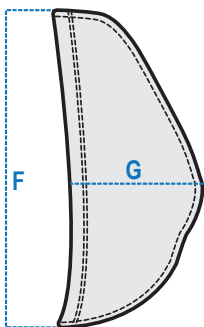
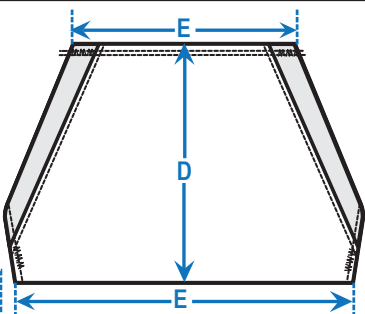
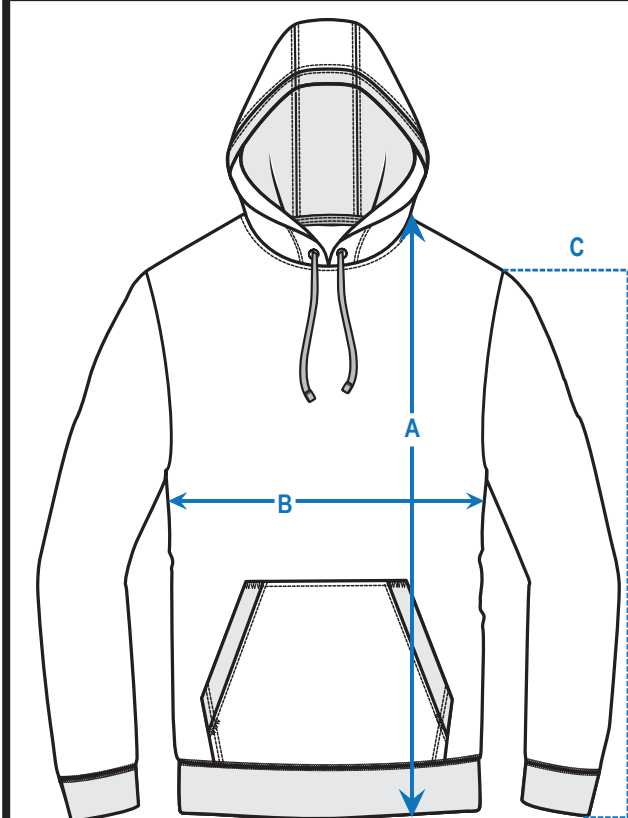
RIBBED COLLAR TEE

- A - **Body Length:** Measure in a straight line from HPS (high point shoulder) down to bottom of garment.
- B - **Body Width:** Measure 1” below armhole and straight across from side seam to side seam.
- C - **Sleeve Length:** Measure from armhole seam to bottom of sleeve at top of sleeve (trim included if applicable).
- D - **Neck Opening:** Measure from **collar seam to collar seam**, straight across (**collar included**).



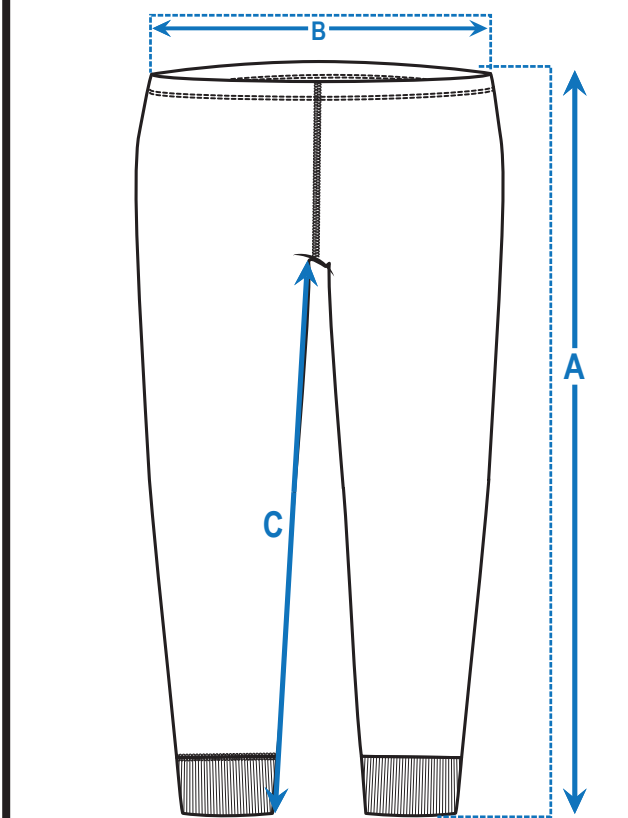
SELF FABRIC COLLAR TEE

- A - **Body Length:** Measure in a straight line from HPS down to bottom of garment.
- B - **Body Width:** Measure 1” below armhole and straight across from side seam to side seam.
- C - **Sleeve Length:** Measure from armhole seam to bottom of sleeve at top of sleeve (trim included if applicable).
- D - **Neck Opening:** Measure from **collar edge to collar edge**, straight across (collar **NOT** included).



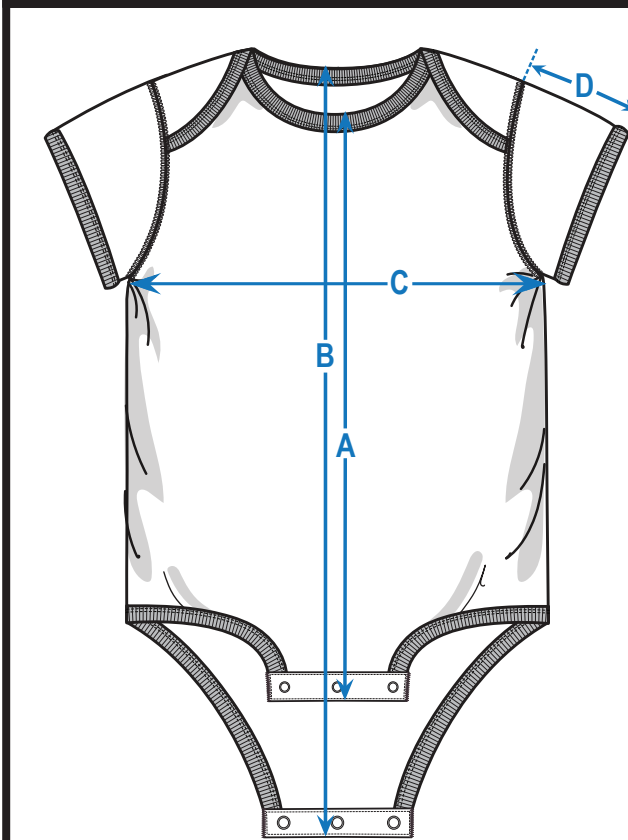
HOODIE

- A - **Body Length:** Measure in a straight line from HPS down to bottom of garment (waistband trim included if applicable).
- B - **Body Width:** Measure 1” below armhole and straight across from side seam to side seam.
- C - **Sleeve Length:** Measure from armhole seam to bottom of sleeve at top of sleeve (trim/cuff included if applicable).
- D - **Pocket Height:** Measure from top to bottom pocket seam at center of pocket.
- E - **Pocket Width:** Measure from edge to edge at top pocket seam **AND** at bottom pocket seam (trim included if applicable).
- F - **Hood Height:** Measure from top to bottom of hood opening (see guide to left).
- G - **Hood Width:** Measure from hood opening to back of hood at center with hood folded and laid flat (see guide to left).



PANTS

- A - **Body Length:** Measure from top of waistband to bottom of leg opening.
- B - **Waistband:** Measure from edge to edge of waistband, **relaxed**.
- C - **Inseam:** Measure from center of crotch seam to leg opening at inside of pant leg.



BODYSUITS

- A - **Body Length (Front):** Measure from top of rib collar to bottom of front snaps at center.
- B - **Body Length (Back):** Measure from top of rib collar to bottom of back snaps at center.
- C - **Body Width:** Measure across body from bottom of armhole to bottom of armhole.
- D - **Sleeve Length:** Measure from armhole seam to sleeve opening at top of sleeve.